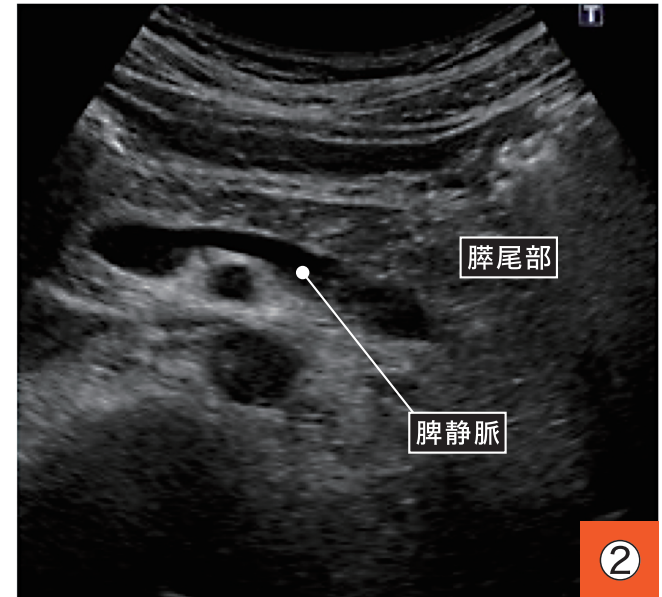
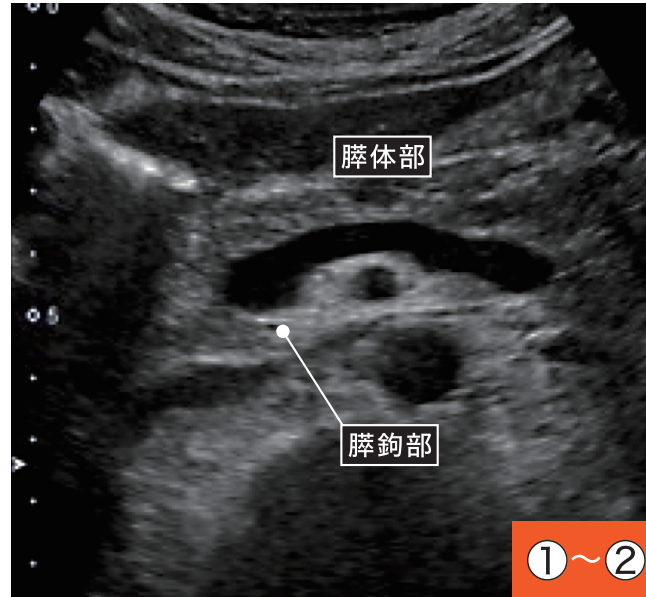
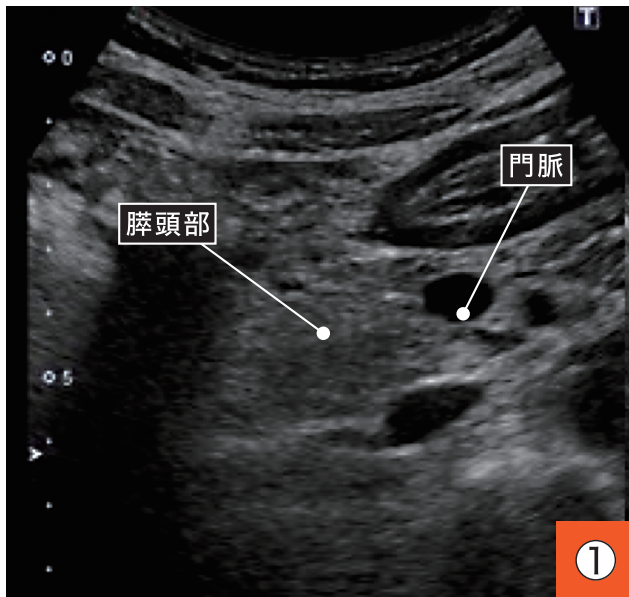


脾臓の観察（横走査）

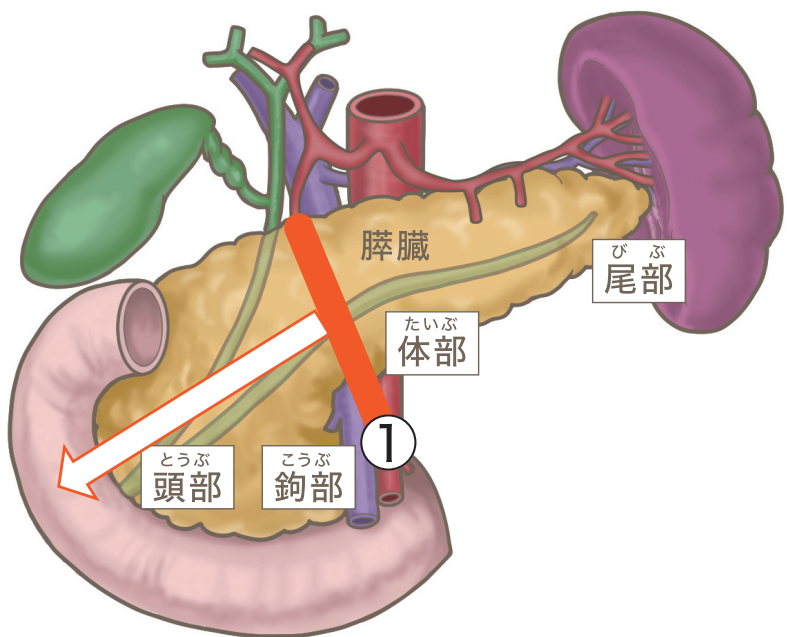
- ① 頭部・鉤部の観察
- ② 体部・尾部の観察（水平～斜位を意識して）



①

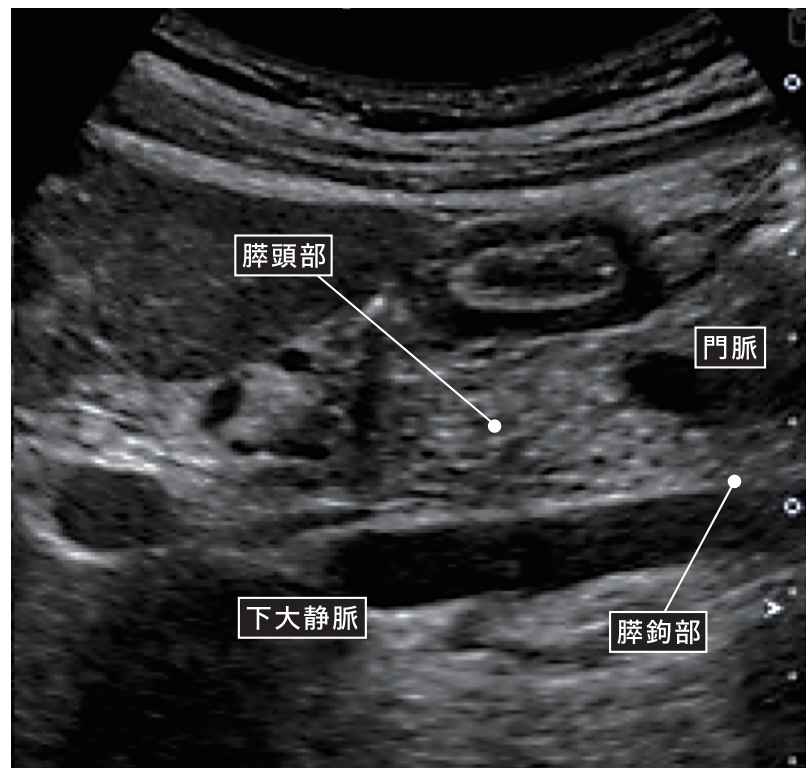
①～②

②

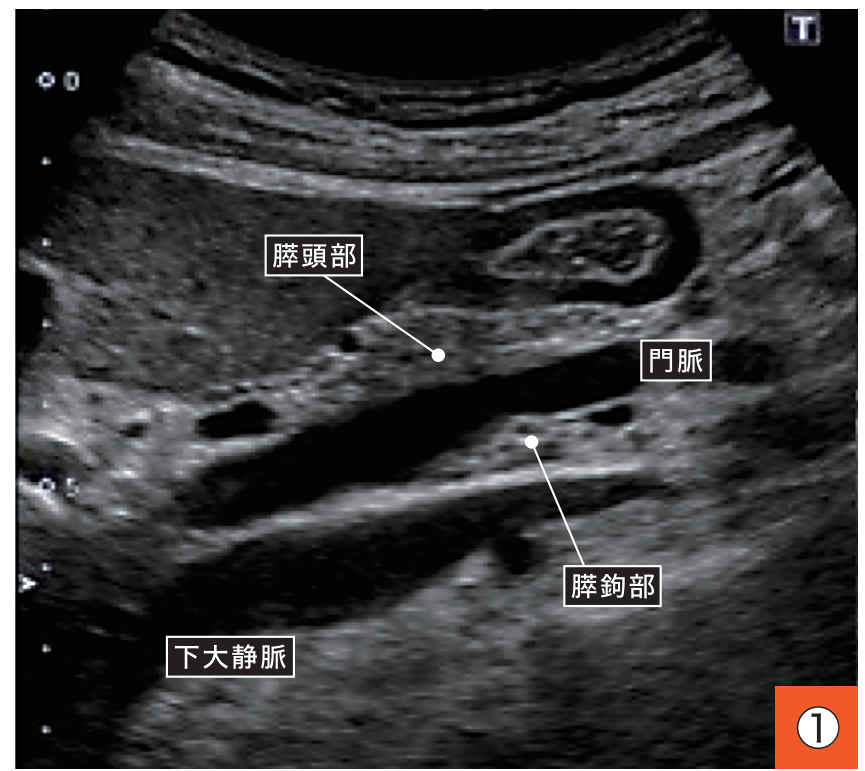


膵臓の観察（縦走査）

- ① 頭部・鉤部の観察
門脈を基点として

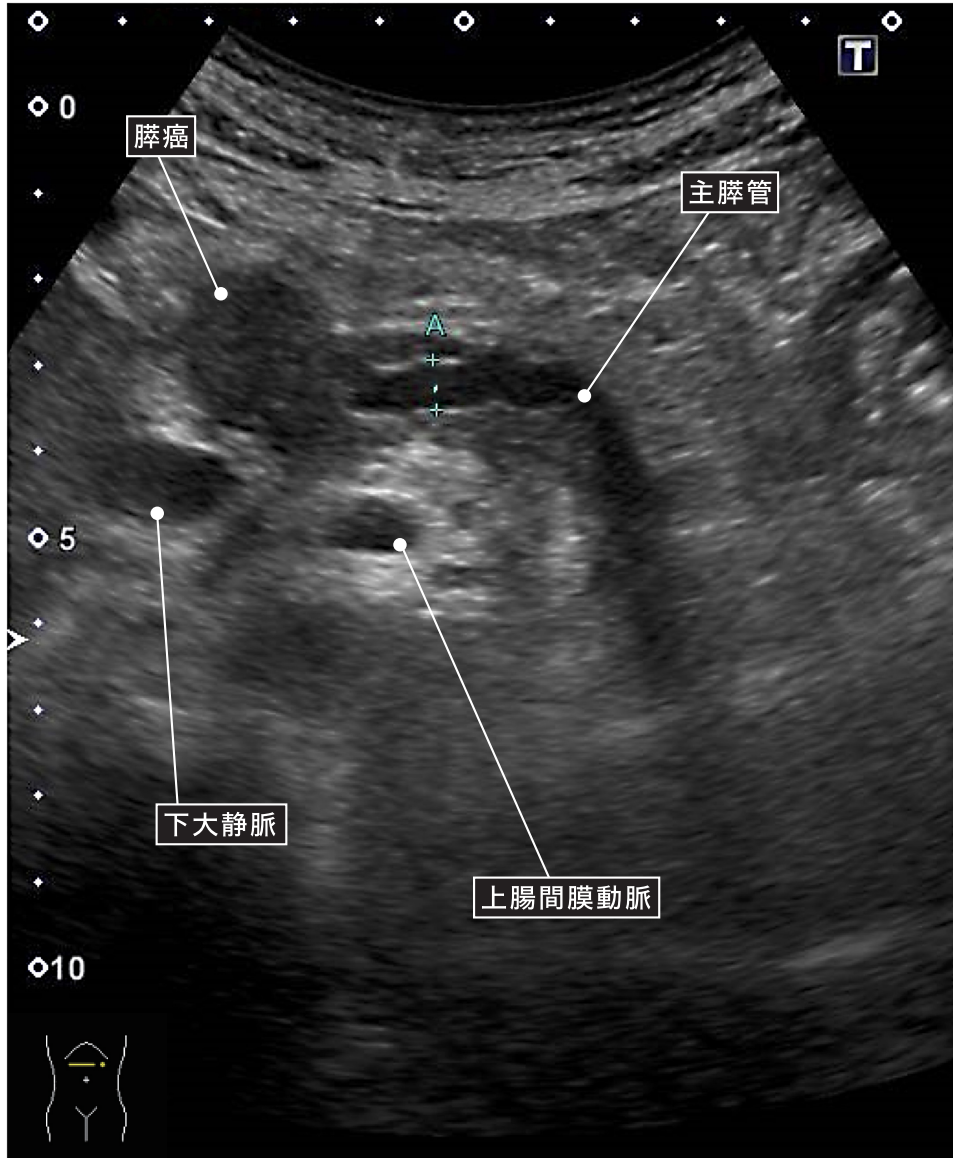


右側へ
sweep
←

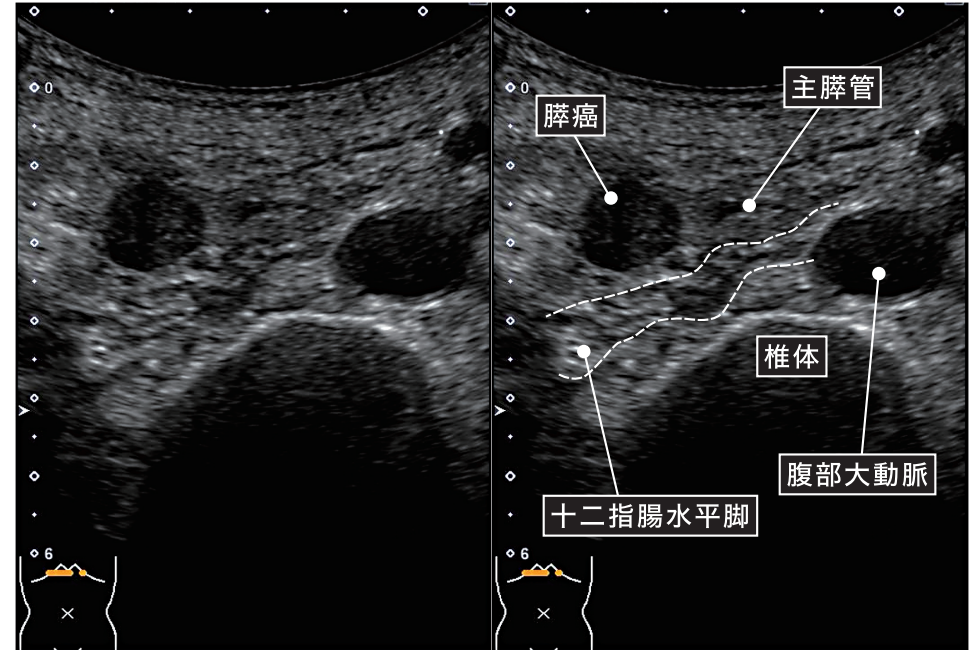


脾癌

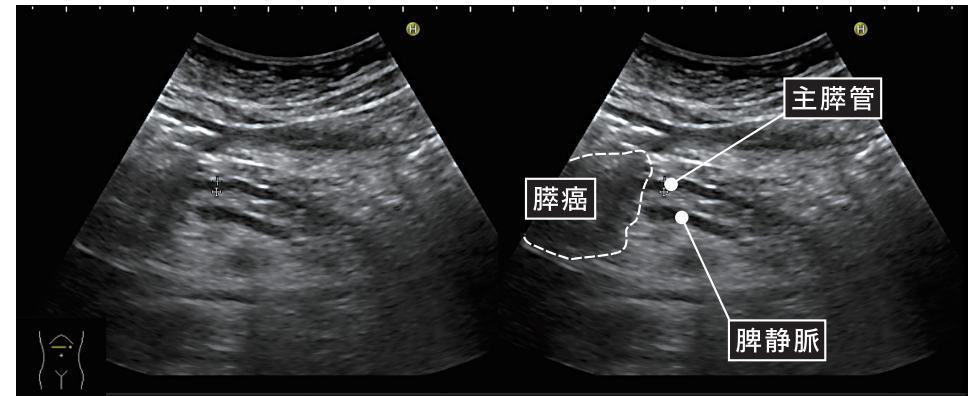
Photo_01



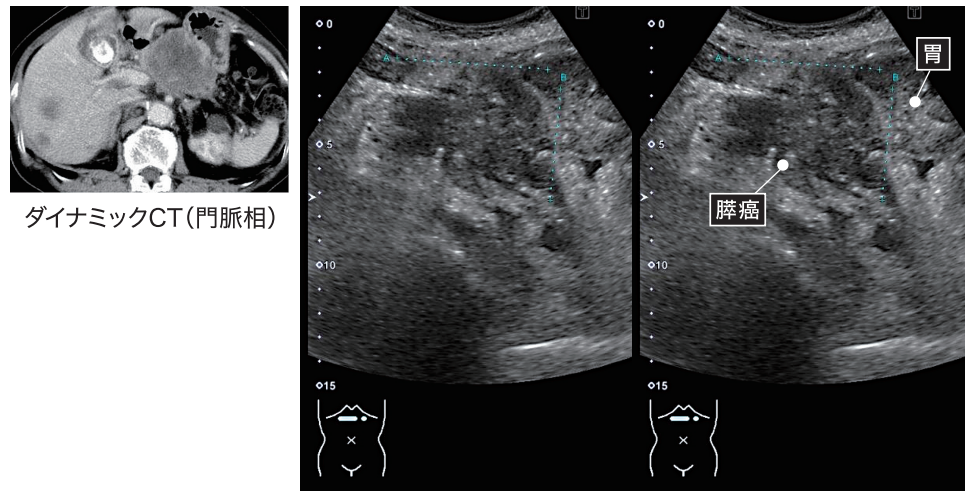
Photo_02



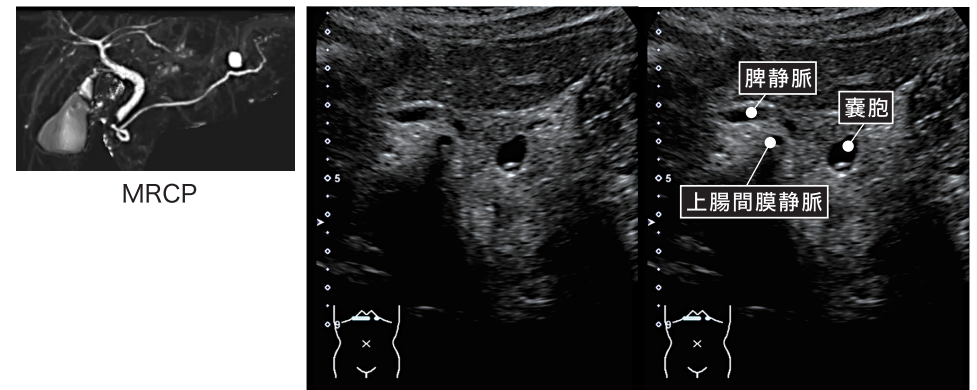
Photo_03



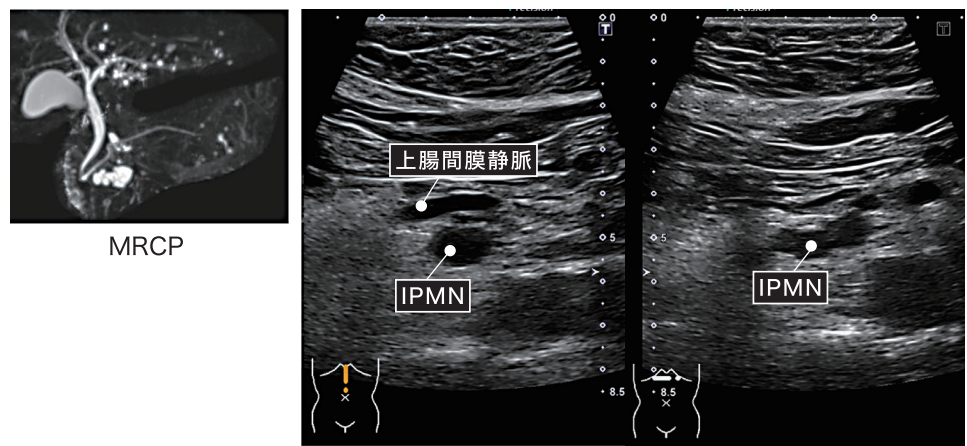
膵癌 (stage IV)



膵嚢胞



IPMN



主膵管の測定方法

●2.5mm以上が主膵管拡張です!

